

## Automotive Diagnostic Tool Cart

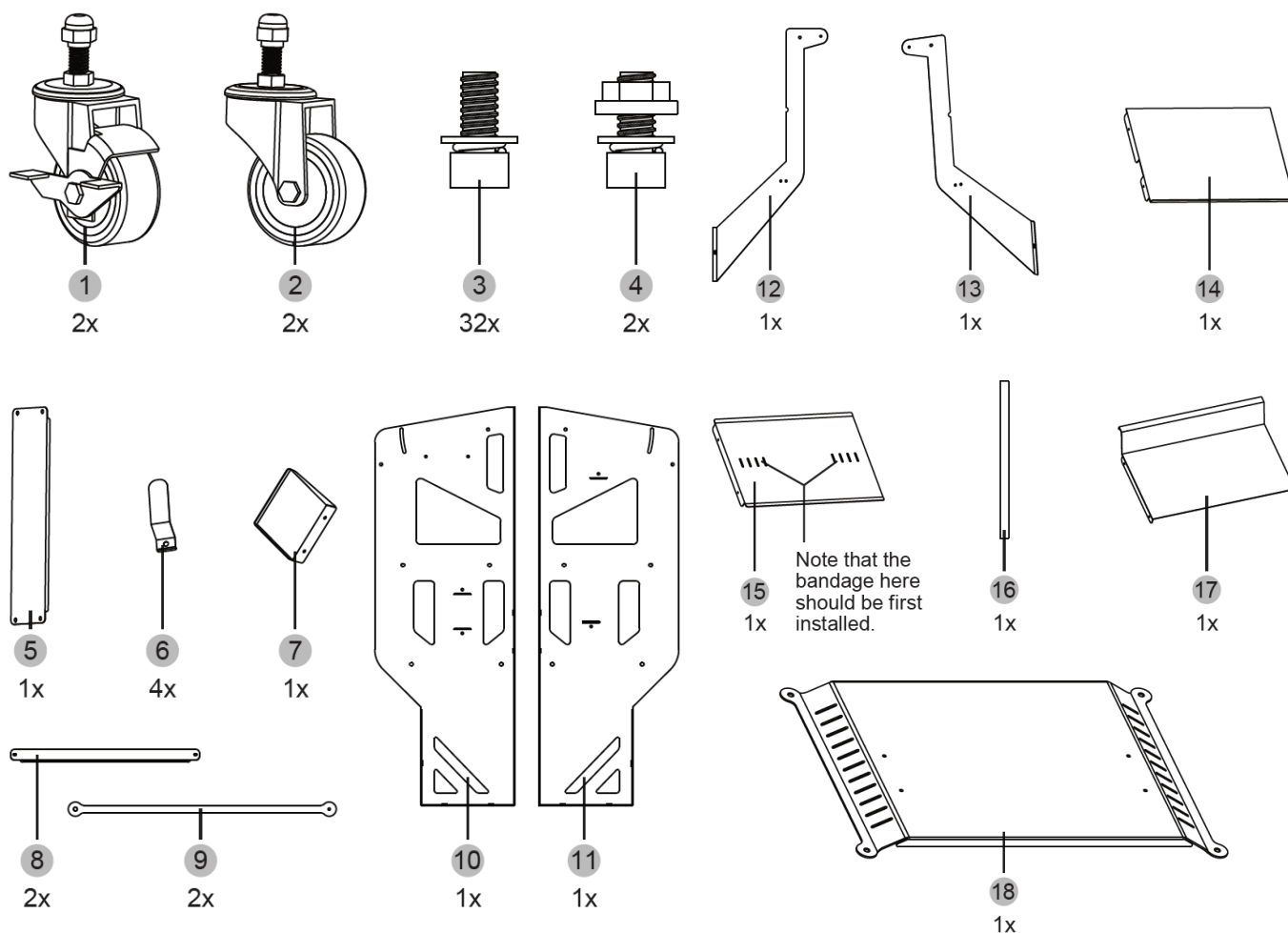


### Information

- Automotive Diagnostic Tool Cart adopts high-quality materials, advanced technology, simple layered design, It is a multi-purpose diagnostic tool cart that combines the laptop computer storage layer, the programming power storage layer, the spare parts storage layer and the battery storage layer, which changes the singleness of the traditional tool cart and creates a comfortable, clean and orderly working environment for you.
- Robust structure , sturdy and durable. It is forged with heavy-duty steel, making it durable and not easy to deform, and the maximum load-bearing capacity can reach 300kg. Powder-coated for excellent rust and corrosion resistance and easy to clean.
- The 360-degree swivel casters are made of natural rubber, which is soft in texture and has a good mute effect, reducing the friction on the ground. Four flexible and secure casters (2 lockable) ensure easy and stable movement and help reduce physical effort when moving and also keeping it in a fixed position.
- Practical hooks make it easy to organize your tools without losing them.

### Precautions

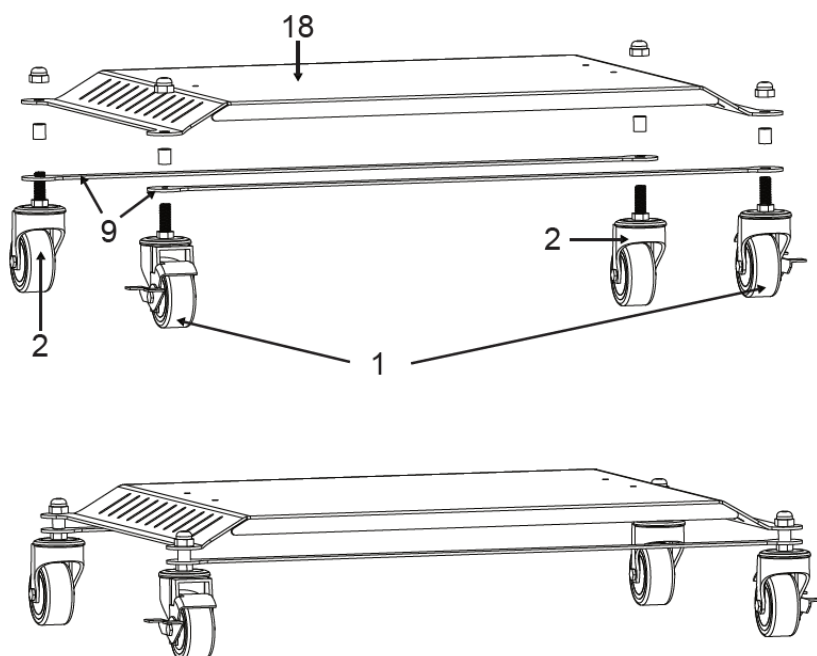
Always wear safety gear.  
Working in a clean and safe environment.  
This task should be carried out by trained personnel.  
Make sure to consult manufacturers manual.  
Do NOT use with air tools.



## Instructions

### Step 1

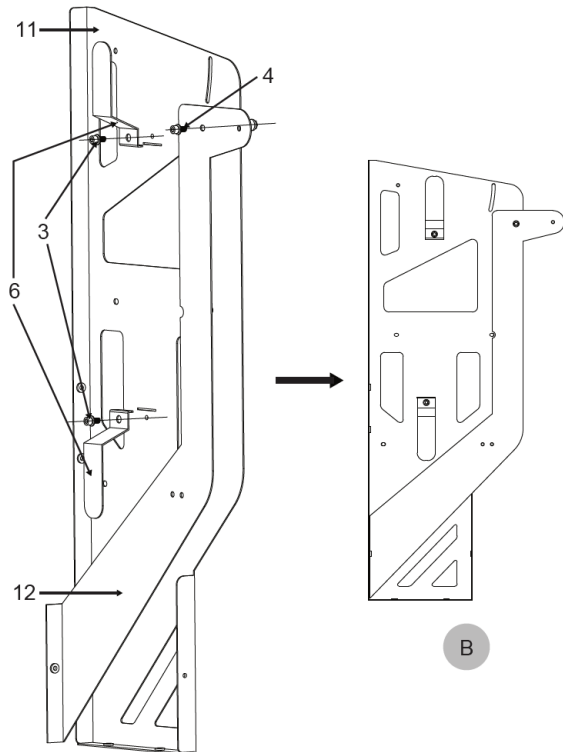
Find parts 1, 2, 9 and 18. Lock the bottom plate and the wheel as shown. The two brake wheels should be installed on the same side and the longer side. The aluminum rings should separate the pull rod from the bottom plate.



## Instructions

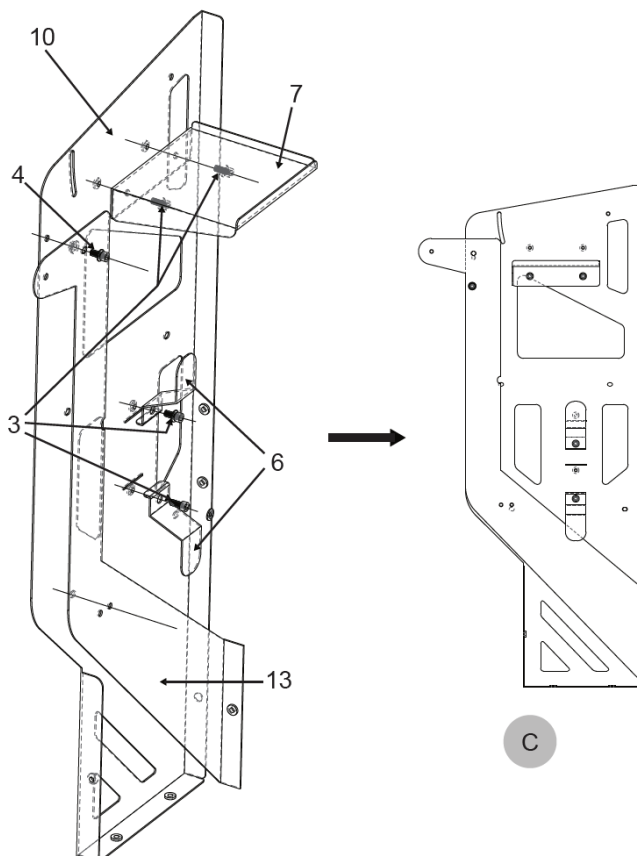
### Step 2

Find parts 3, 4, 6, 11 and 12. Lock the screws as shown. Note that screw number 4 has a nut. Carefully place number 3 and 4 in the correct positions.



### Step 3

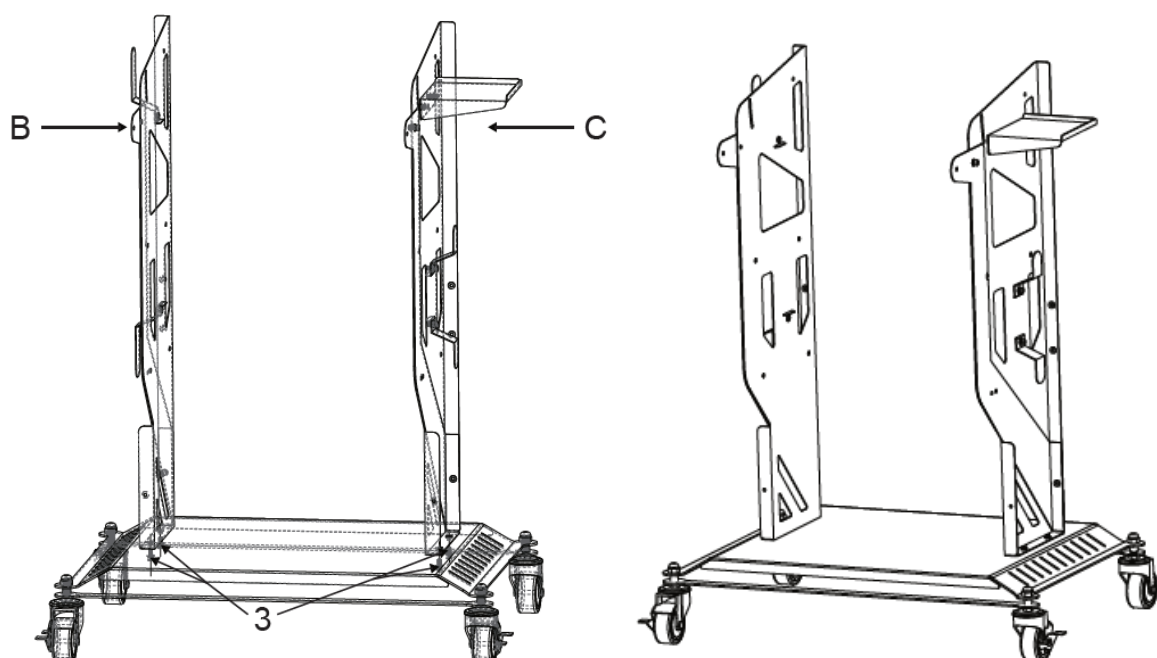
Find parts 7 and 13. Tighten the screws and place other parts as shown. Place number 7 in the correct direction indicated, noting the position of the number 4 nuts.



## Instructions

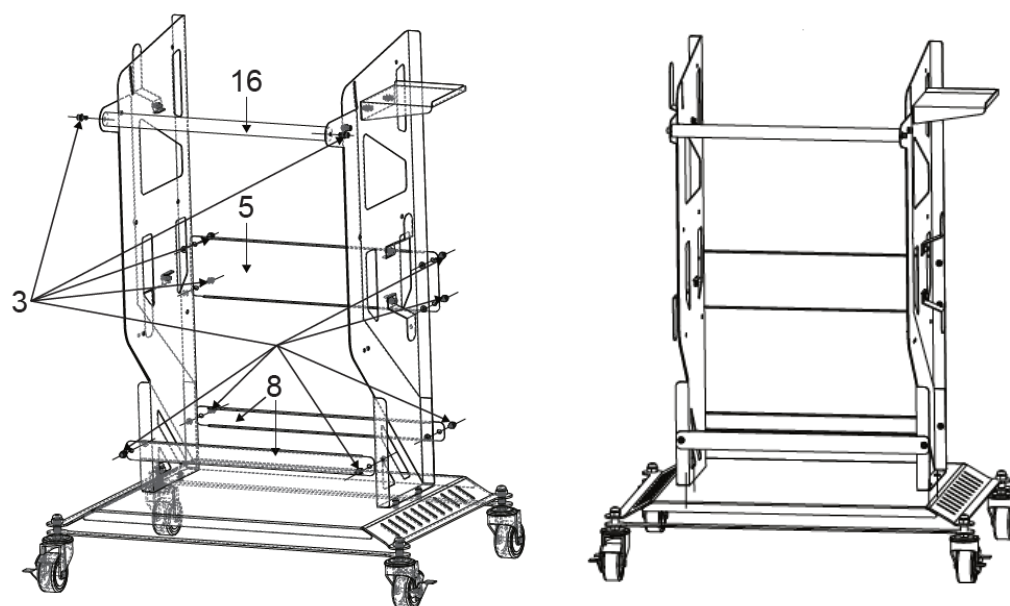
### Step 4

Install the assembled pieces from the previous steps in the correct directions, locking them in using screws.



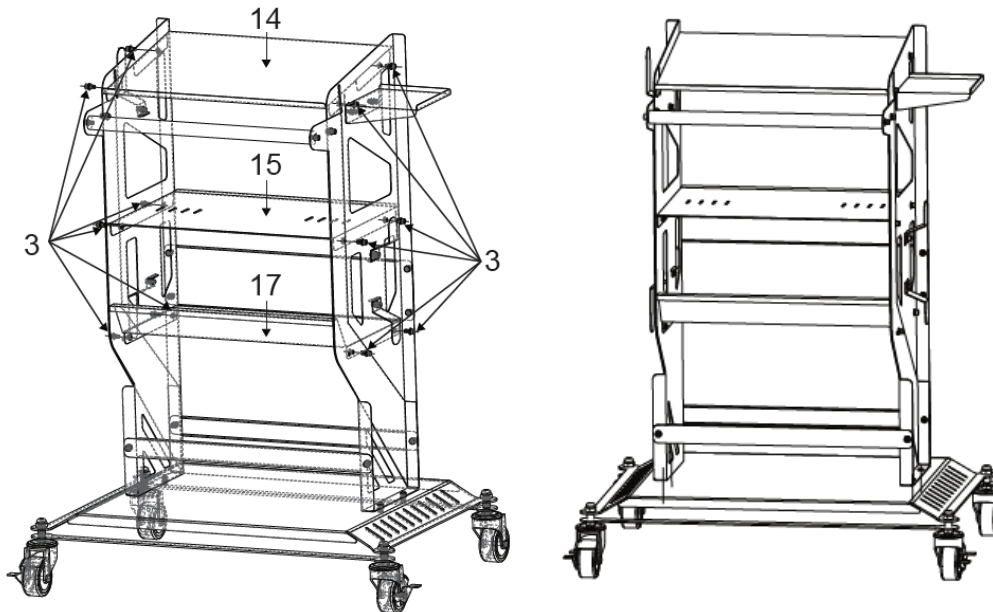
### Step 5

Find parts 3, 5, 8, and 16. Lock parts 5, 8 and 16. Note the forward and backward placement of accessories.



### Step 6

Find parts 3, 14, 15, and 17. Lock parts 14, 15 and 16 using screws. Note the forward and backward placement of the parts.



## Maintenance

---

- Avoid putting the product (especially the sheet metal housing) in contact with any rough surfaces in order not to wear the product.
- Make regular checks for any parts that may need to be tightened or connected securely to ensure the procedure is carried out safely.
- External and internal parts of the equipment which come into contact with various chemicals should have regular anti corrosion treatments (i.e. rust removal and painting) to extend the life of the product and enhance its corrosion resistance.
- Do not overload.
- Thoroughly check the circuit part and replace any aging wires in time.
- Avoid contact with corrosive liquids and replace any worn parts.
- Store in a cool, dry place. Do not store in hot or non-ventilated areas.

## Warranty

---

If you are unsure on how to use the item please contact us. If it were to fail due to a manufacturing fault or poor workmanship we will repair or replace it. Please contact your local dealer in the event you need to send the item back. You can also make a repair/replacement request on our website and download & complete the form online. Normal wear and tear along with misuse will void any warranty. Consumables are not covered under warranty.

[www.welzh.com](http://www.welzh.com)

Limited **12 month** warranty



Welzh Werkzeug Ltd  
Loanwath Road  
Gretna, Scotland  
DG16 5HD  
+44 (0)1461 700120