
Universal Extendable Engine Support



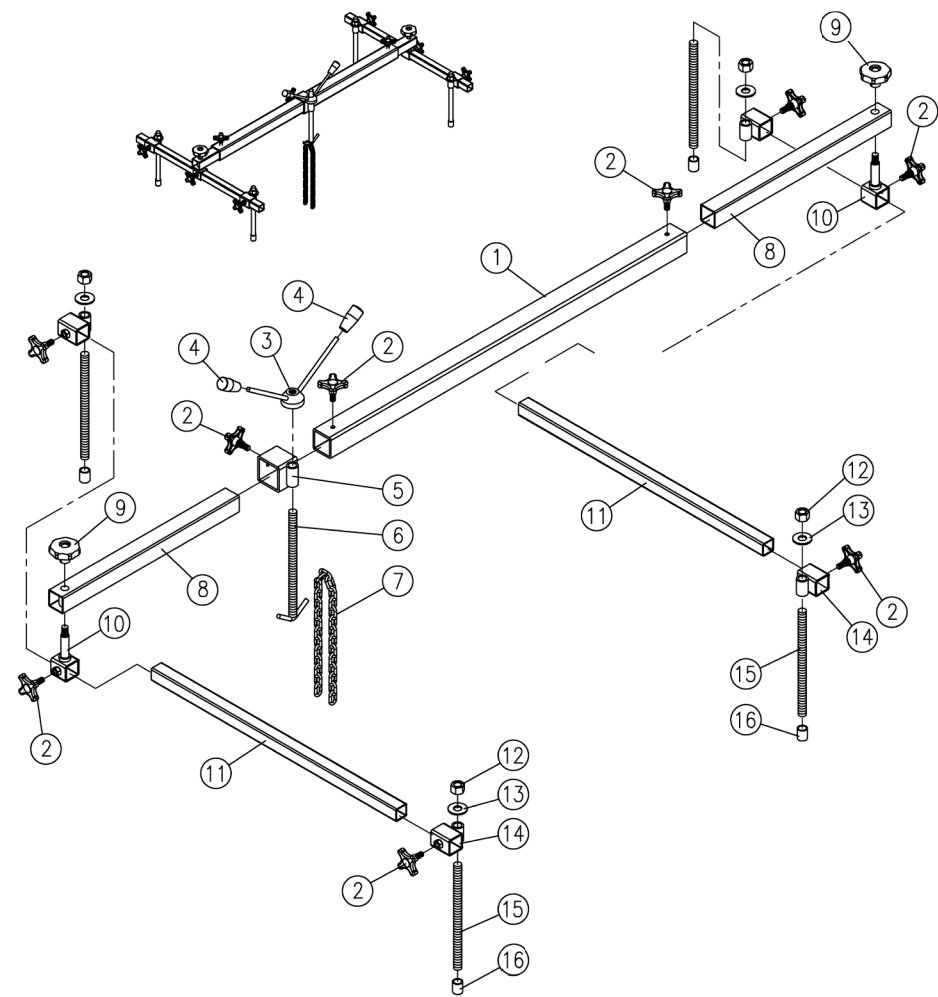
Information

- Specially designed to support position engines during maintenance operations i.e. replacement of anti-vibration mountings and certain body panels, removal of gearboxes and transmissions.
- Maximum 500 Kg.
- 4 feet support system.
- Adjustable height and width via screw-hook mechanism for perfect stability.
- Includes chain.
- Plastic anti-slip feet for damage free procedure.

Precautions

Always wear safety gear.
Working in a clean and safe environment.
This task should be carried out by trained personnel.
Make sure to consult manufacturers manual.
Do NOT use with air tools.

Description



Item No.	Description	Quantity
1	Square tube [Longest].	1
2	Knob [Small].	9
3	Adjustment nut.	1
4	Knob.	2
5	Joint [Big].	1
6	Hook [Attached screw].	1
7	Chain.	1
8	Square tube [Short].	2

Item No.	Description	Quantity
9	Knob [Big].	2
10	Joint [Attached screw].	2
11	Square tube [Middle].	2
12	Nut [M14].	4
13	Washer [M14].	4
14	Joint [Small].	4
15	Adjustment screw.	4
16	Protection cover.	4

Description

- Maximum 500 Kg.
- 4 feet support system.
- Chain provides extra security and stability for fixing the engine.
- Ideal for small, highly inclined engine compartments.
- Specially designed to assist in easing the engine being lifted while it is positioned on the car's front axle (also for cars with plastic wheel arch).
- Adjustable height and width to fit all directions for perfect stability as well as avoiding the danger of overturning.
- Supporting feet adjustable directions, height, inclination, position, and width.
- Plastic anti-slip feet for damage free procedure.



Warranty

If you are unsure on how to use the item please contact us. If it were to fail due to a manufacturing fault or poor workmanship we will repair or replace it. Please contact your local dealer in the event you need to send the item back. You can also make a repair/replacement request on our website and download & complete the form online. Normal wear and tear along with misuse will void any warranty. Consumables are not covered under warranty.

www.welzh.com

Limited **12 month** warranty



Welzh Werkzeug Ltd
Loanwath Road
Gretna, Scotland
DG16 5HD
+44 (0)1461 700120